

# ERSATZNEUBAU DES HEINRICH - HERTZ GYMNASIUM

BERLIN FRIEDRICHSHAIN AM OSTBAHNHOF



# LAGEPLAN 1:2000 | 1



LAGEPLAN 1:2000 | 2

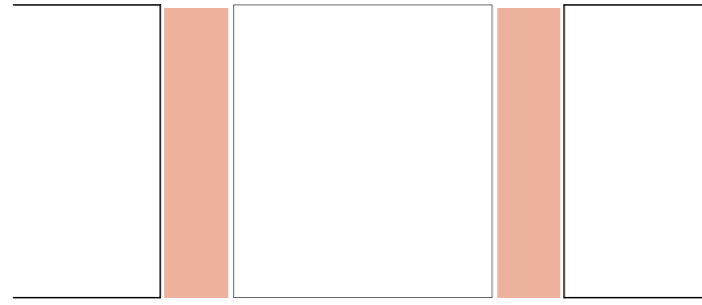


LAGEPLAN 1:500 | 3

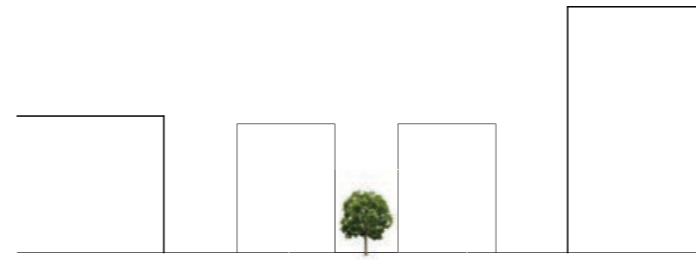


# FORMFINDUNG I 4

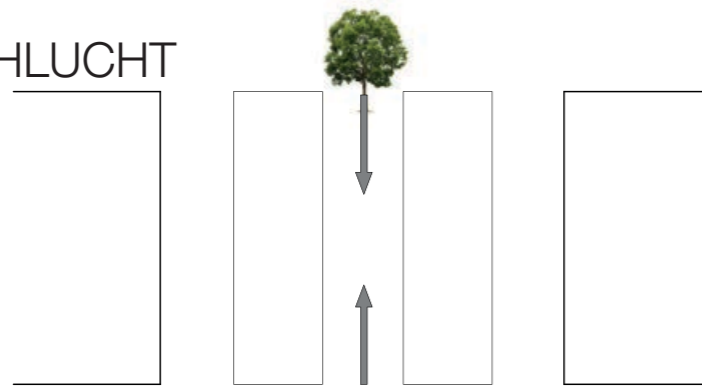
1. ABSCHOTTUNG



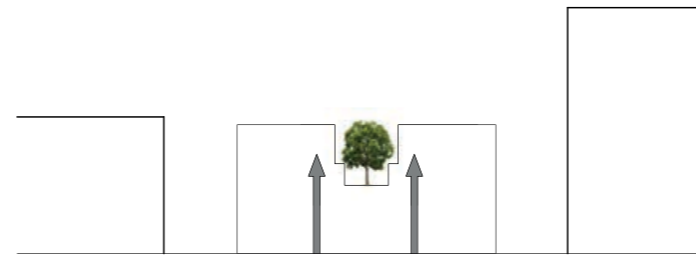
1. KEIN DURCHGANG!



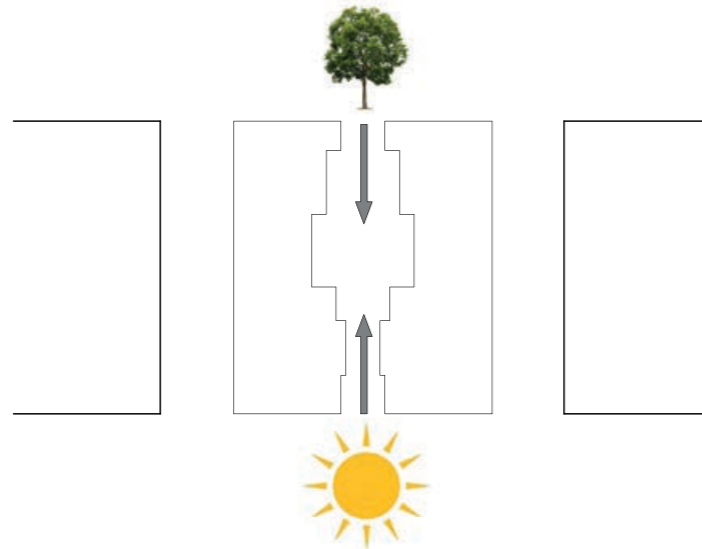
2. THEMA SCHLUCHT



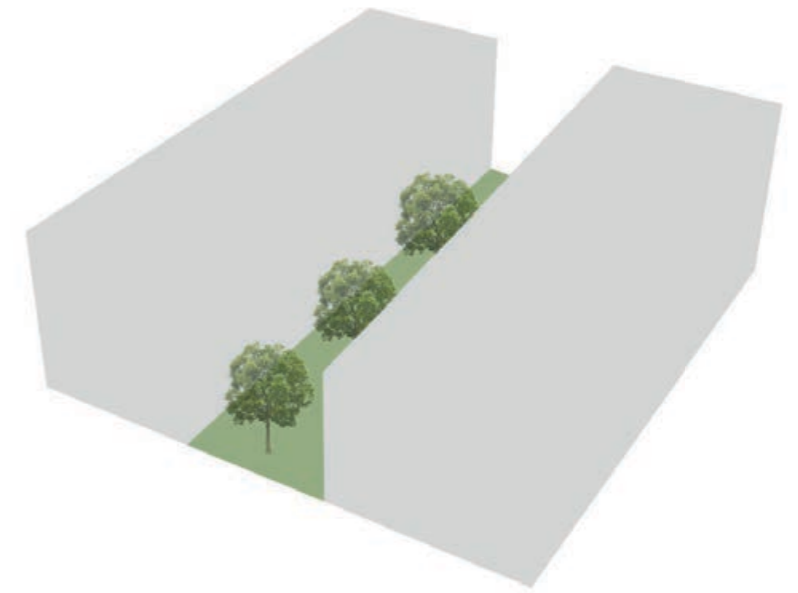
2. HOF HOCHLEGEN



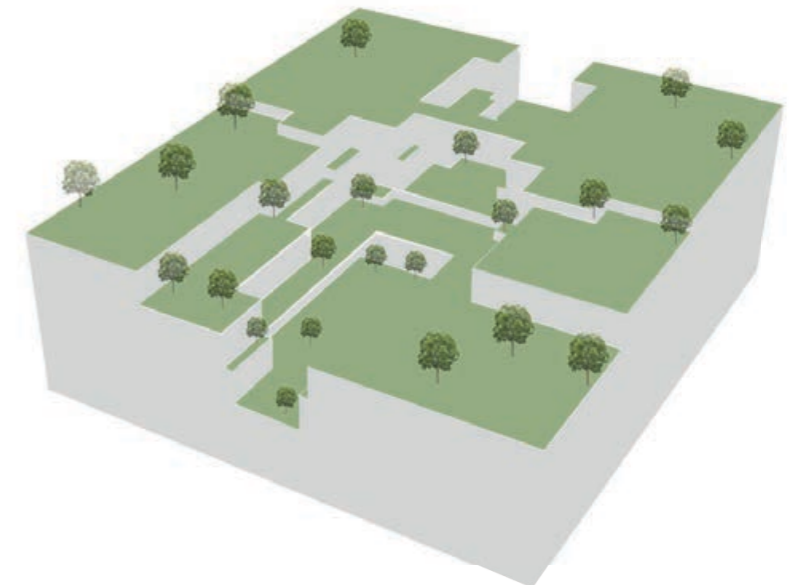
3. ENDFORM



FREIFLÄCHE AUF 1. EBENE



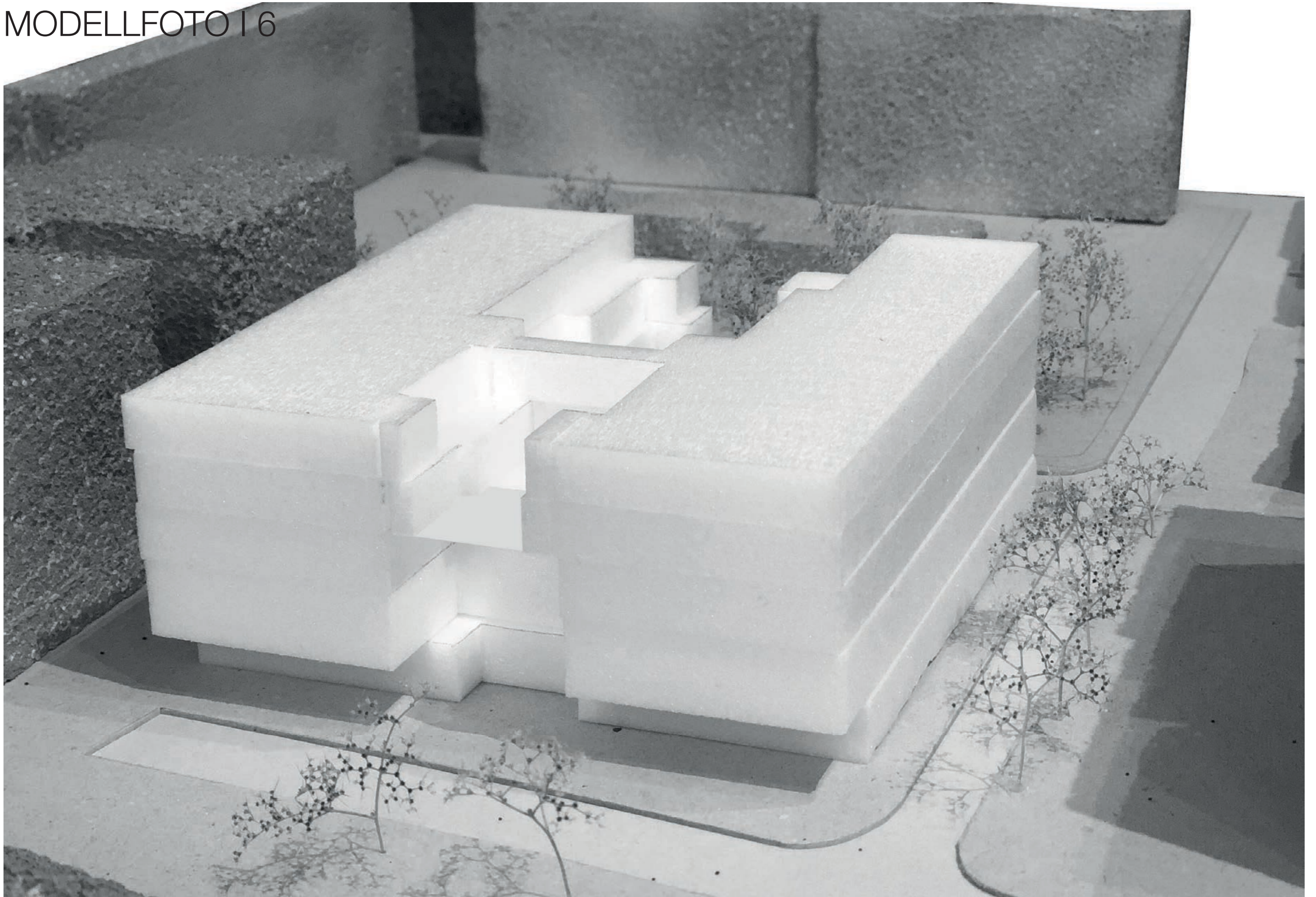
FREIFLÄCHE VERTEILT AUF MEHREREN EBENEN



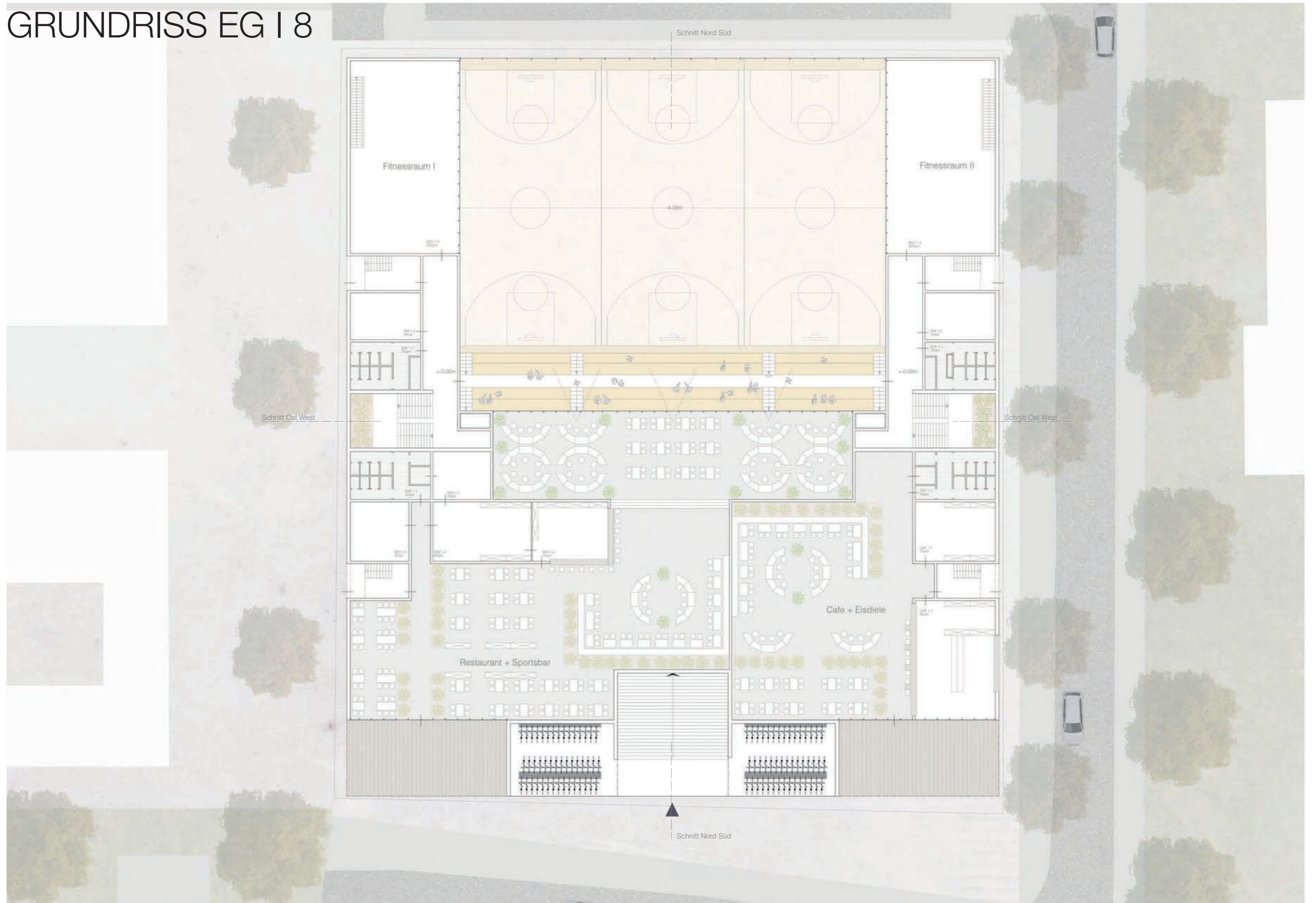
# PERSPEKTIVE I 5



# MODELLFOTO 16

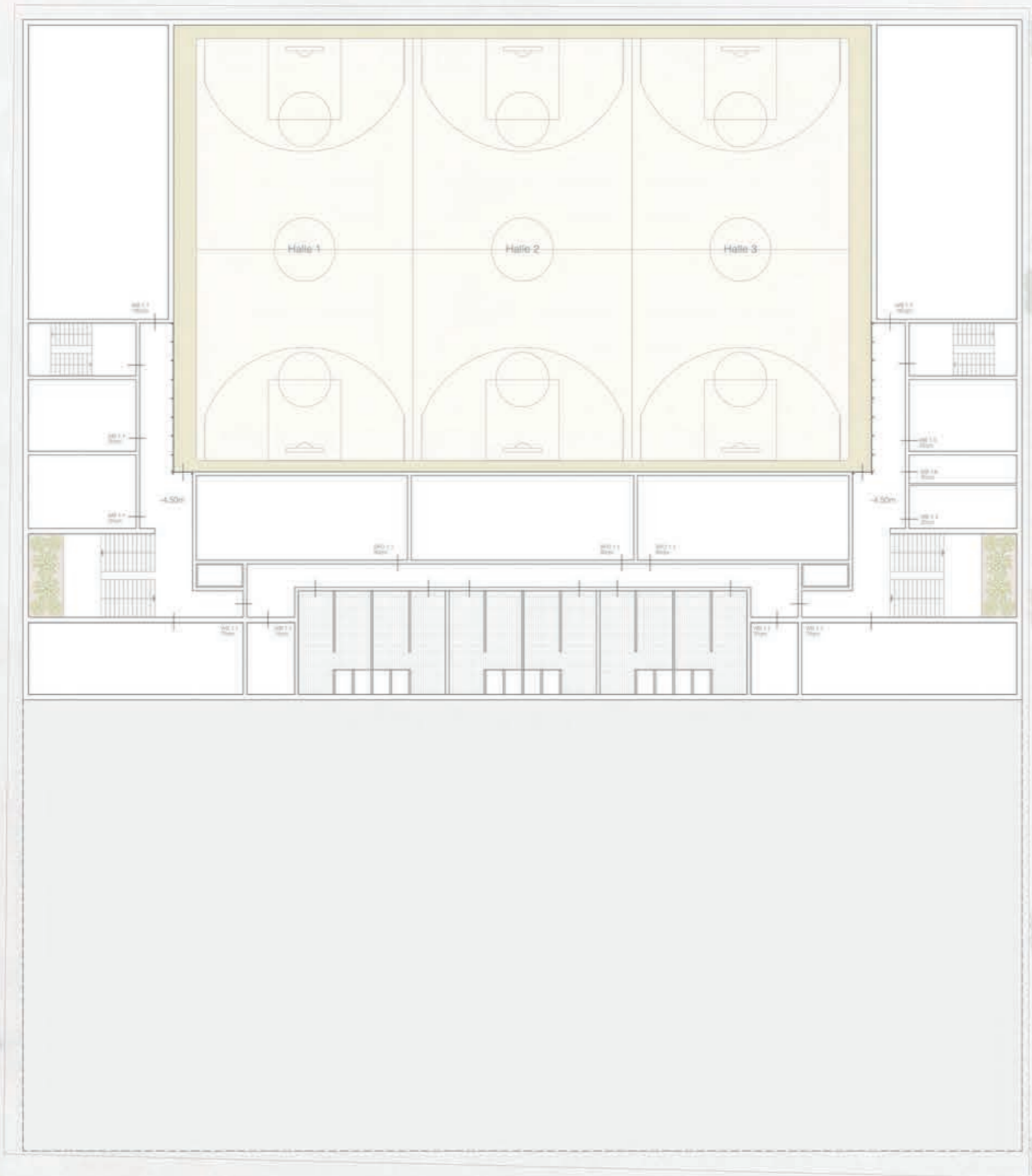


# GRUNDRISS EG I 8

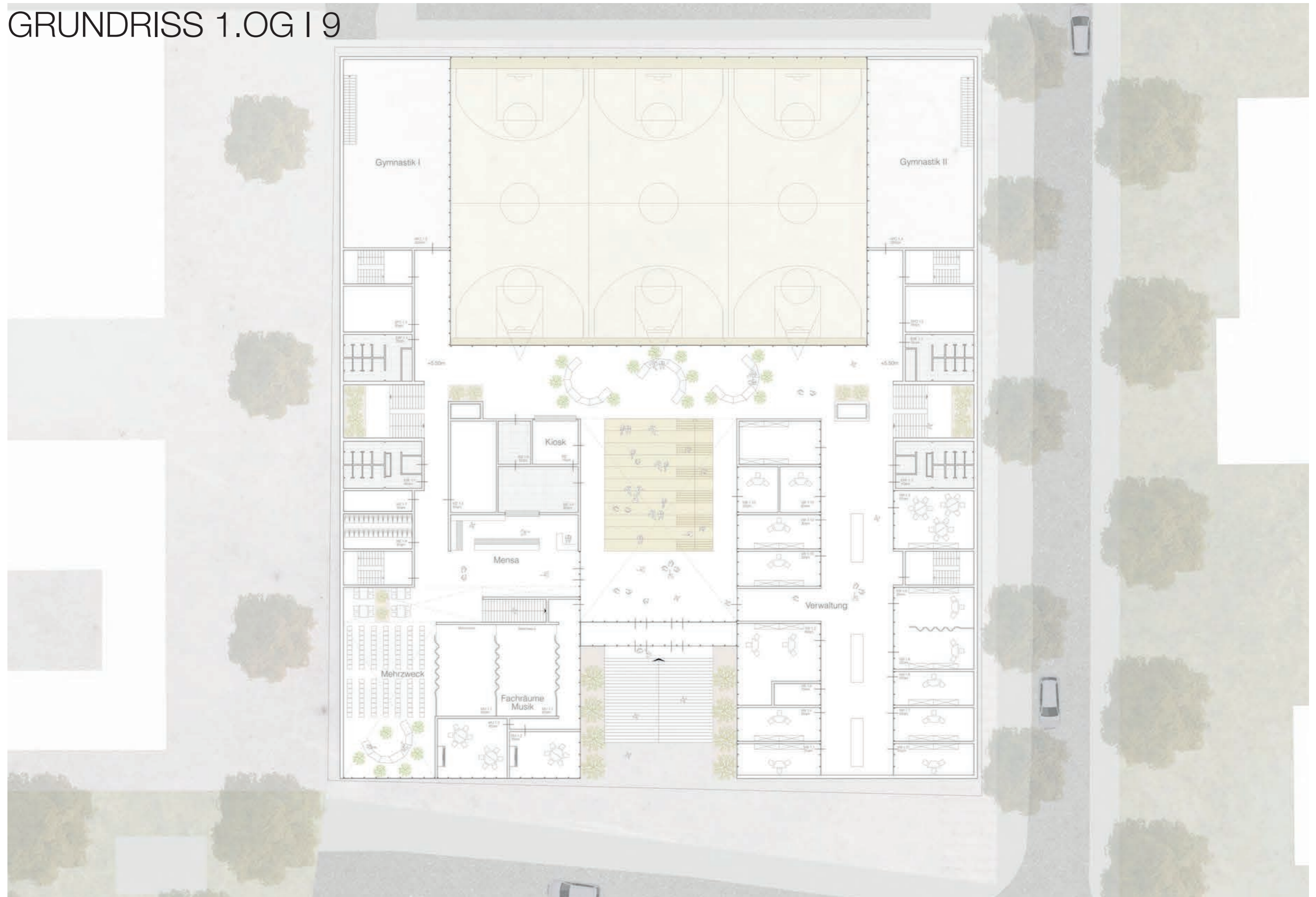




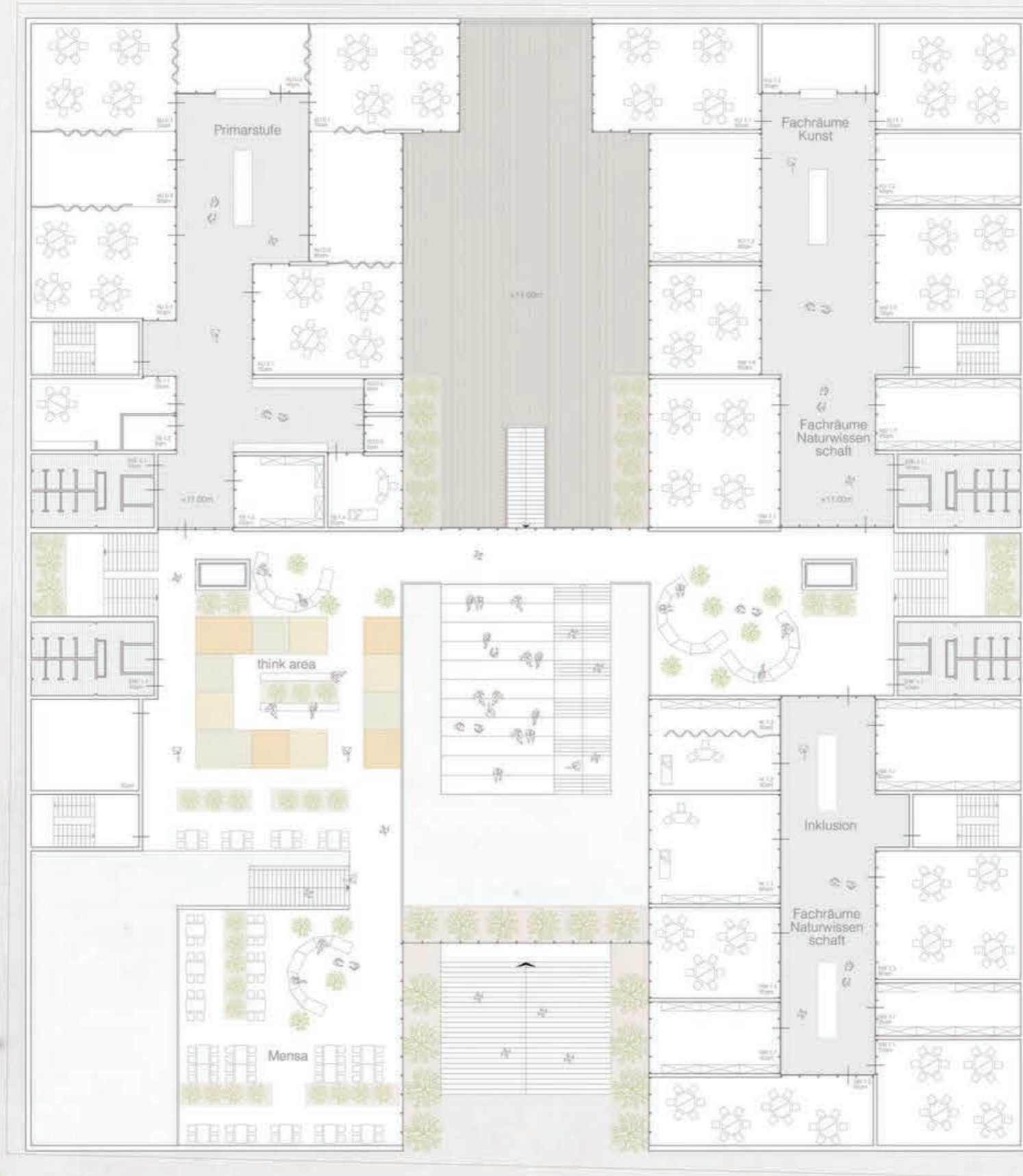
# GRUNDRISS KG I 8



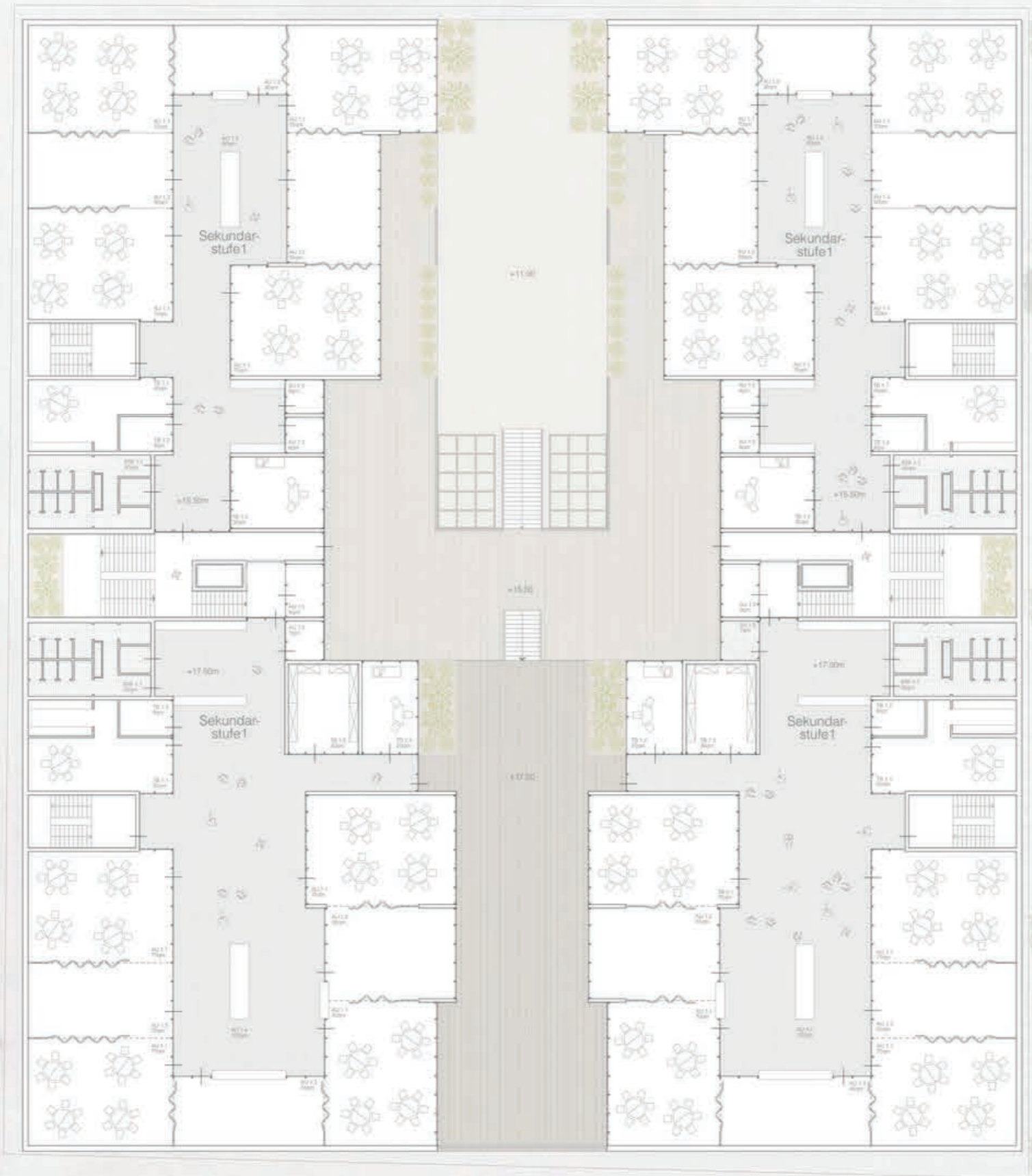
# GRUNDRISS 1.OG | 9



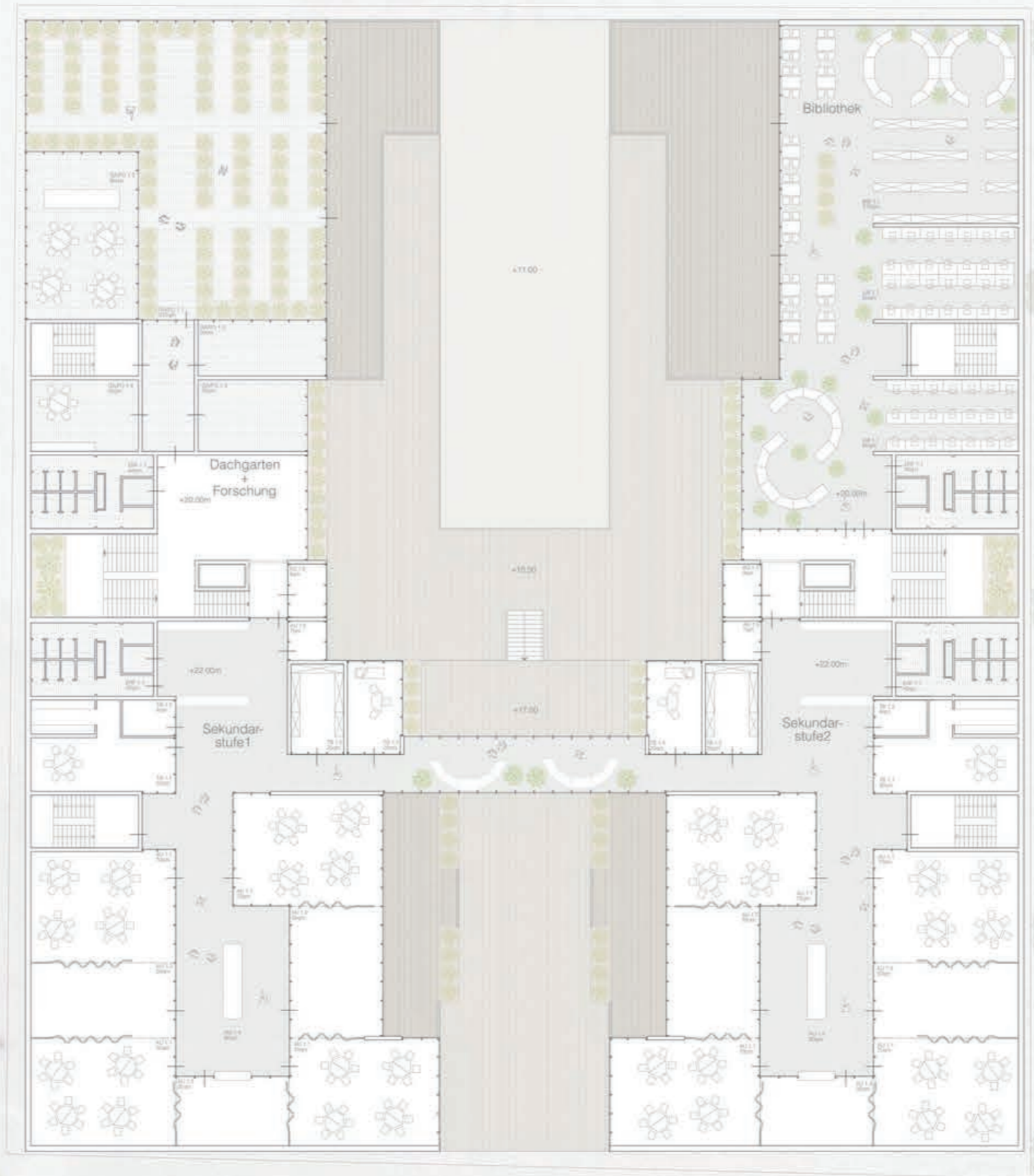
# GRUNDRISS 2.OG | 10



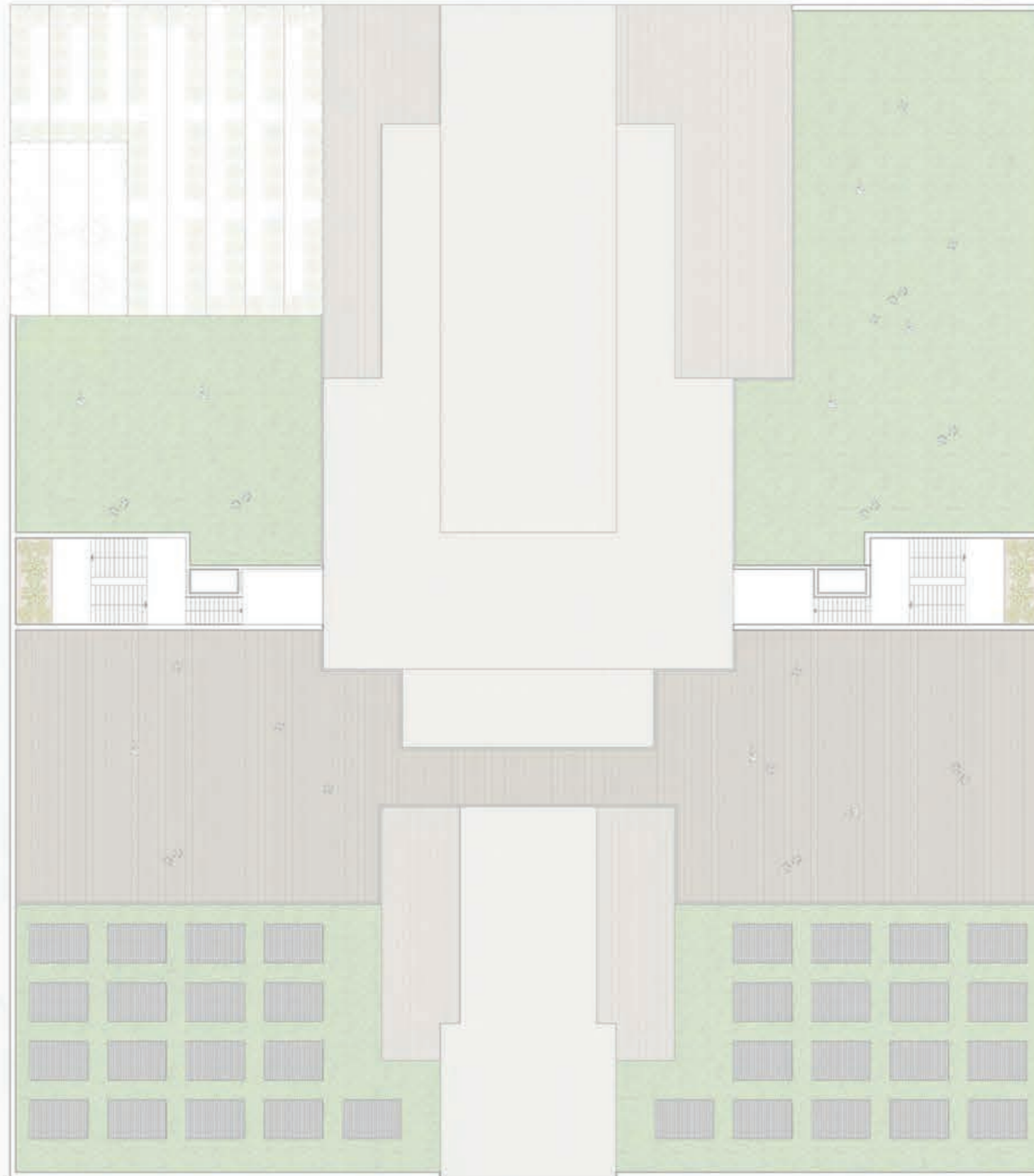
# GRUNDRISS 3.OG | 11



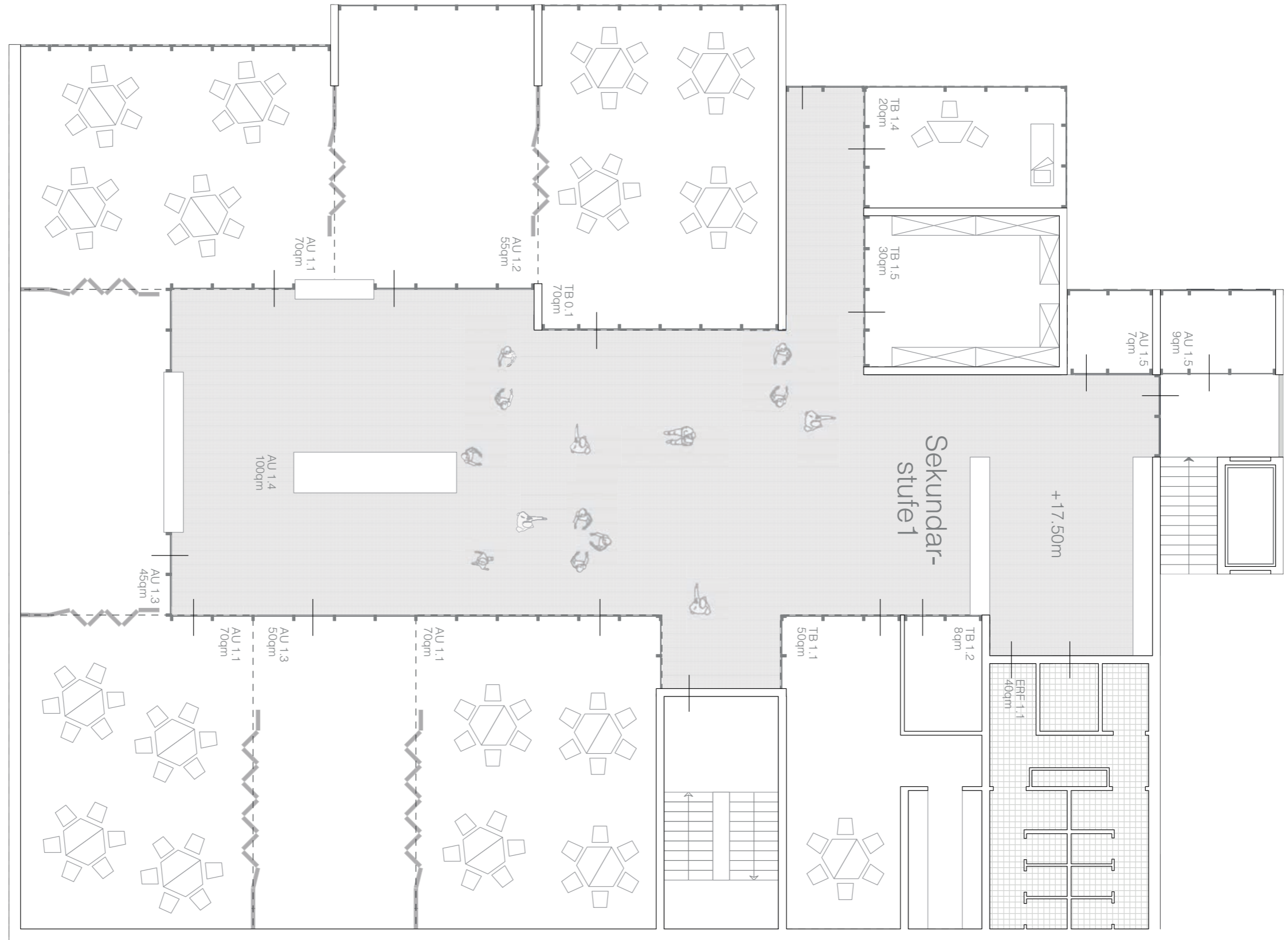
# GRUNDRISS 4.OG | 12



# GRUNDRISS DACHEBENE I 13



# COMPARTMENT SEK. 1 | 14

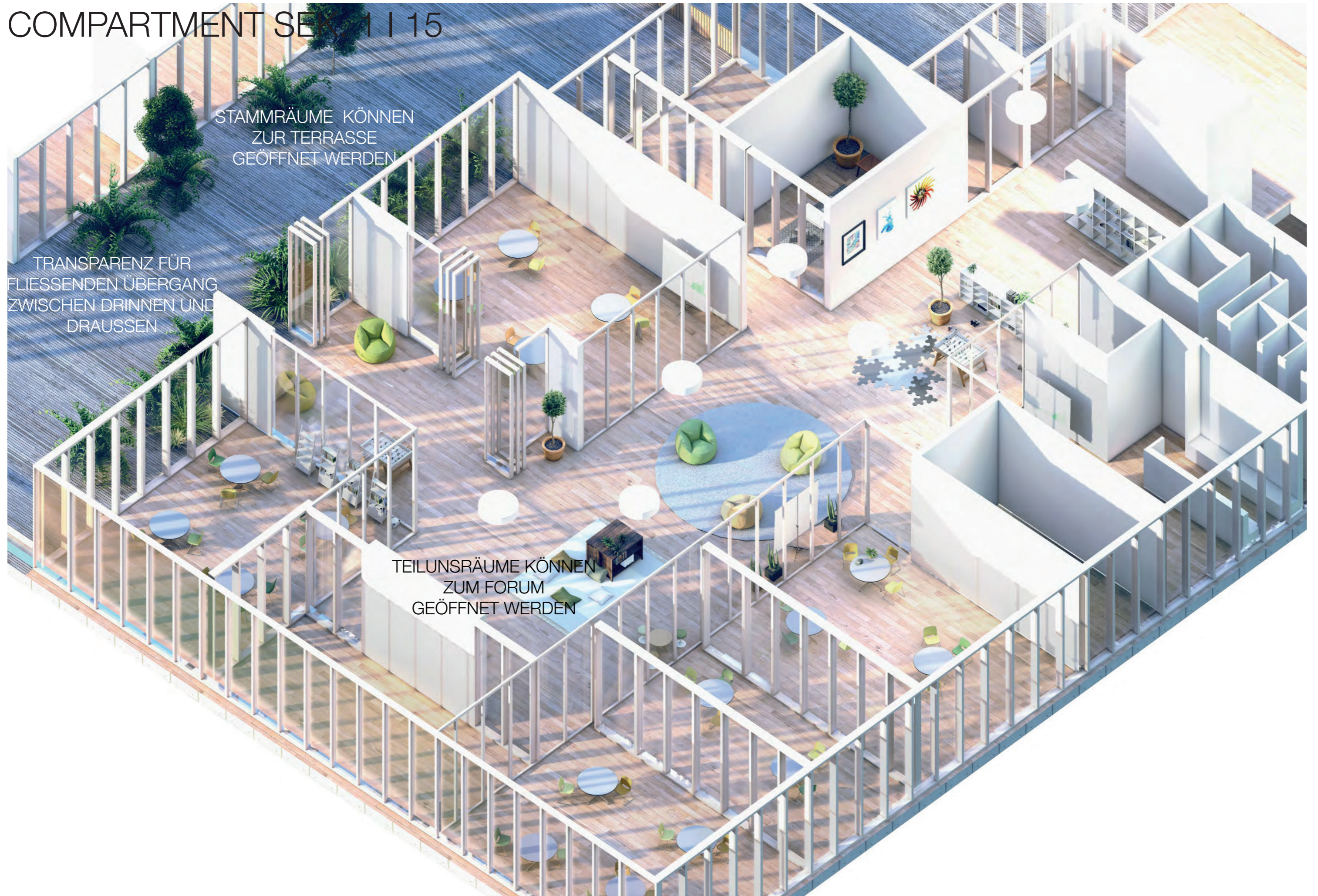


# COMPARTMENT SEK 1 | 15

STAMMRÄUME KÖNNEN  
ZUR TERRASSE  
GEÖFFNET WERDEN

TRANSPARENZ FÜR  
FLIESSENDE ÜBERGANG  
ZWISCHEN DRINNEN UND  
DRAUSSEN

TEILUNSRÄUME KÖNNEN  
ZUM FORUM  
GEÖFFNET WERDEN

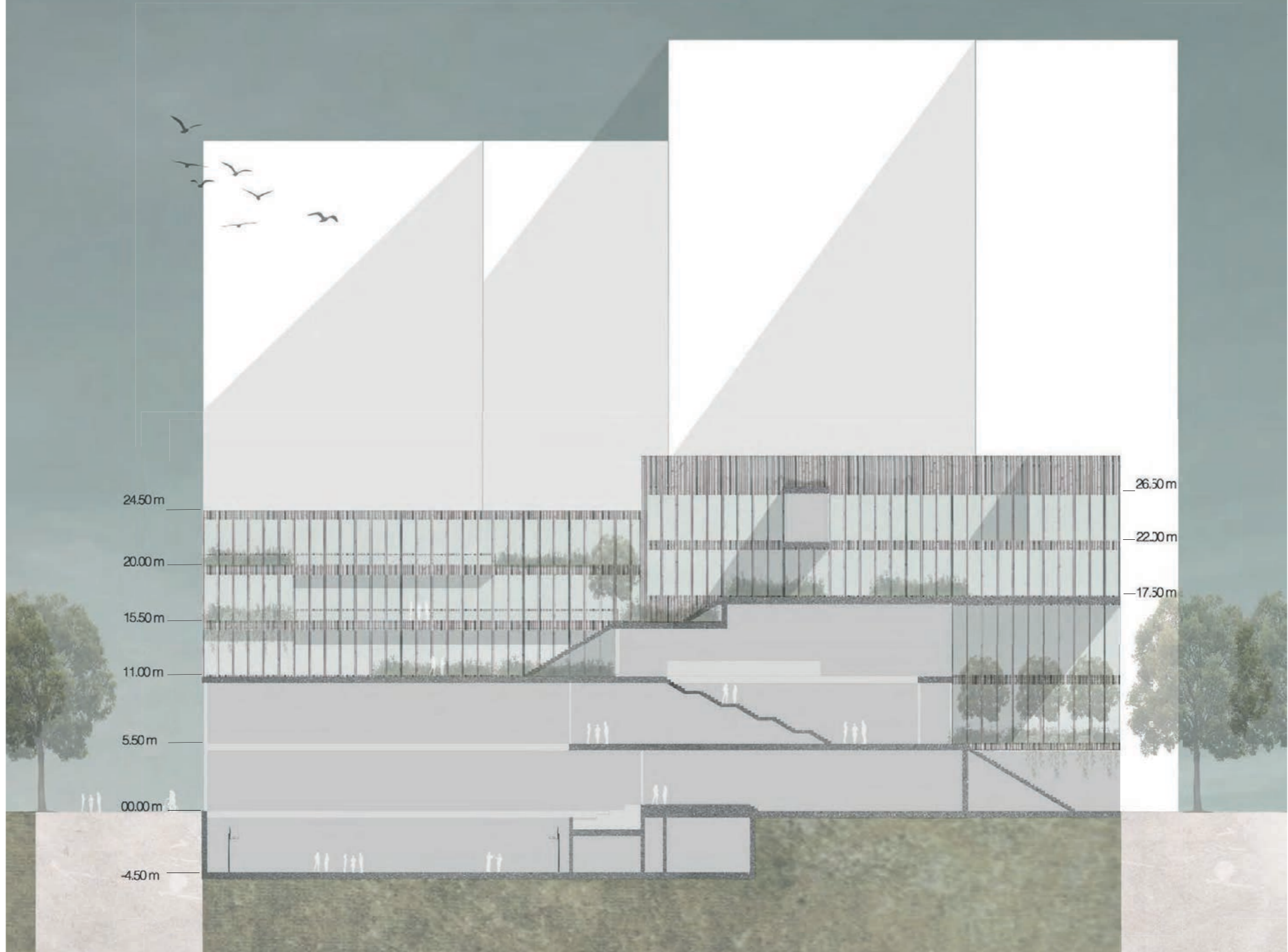




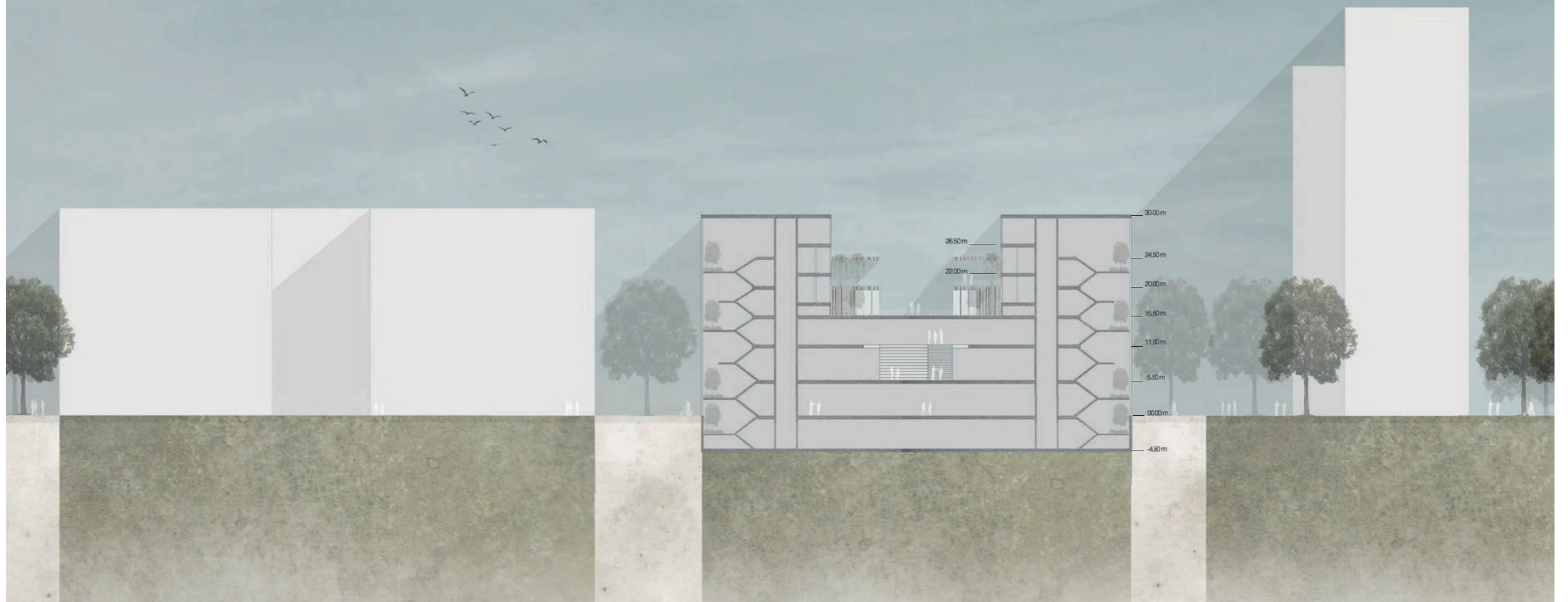
# PERSPEKTIVE COMPARTMENT I 16



# SCHNITT NORD\_SÜD I 17



# SCHNITT OST\_WEST | 18



# ANSICHT SÜD I 19



# ANSICHT NORD I 20



# FASSADENANSICHT | 21



Sockelbereich aus Sichtbeton

Geschosse:

Raumhochverglaste Fassade  
+ Antrazit farbige Fensterrahmen

+ Geschossdecke hebt sich durch  
die Antrazitfärbung hervor

Verschiebbare Holzlamellen  
+ Nach Belieben elektrisch verstellbar

Ziel:

+ Abheben der oberen Geschosse durch  
geschlossenes Sockelgeschoss

+ Holzlamellen erzeugen einen  
geschlossenen Charakter

+ Raumhohe Fenster ermöglichen dennoch  
genügend Licht

+ Fassade öffnet sich zum Innenhof

# PERSPEKTIVE FRONT I 22

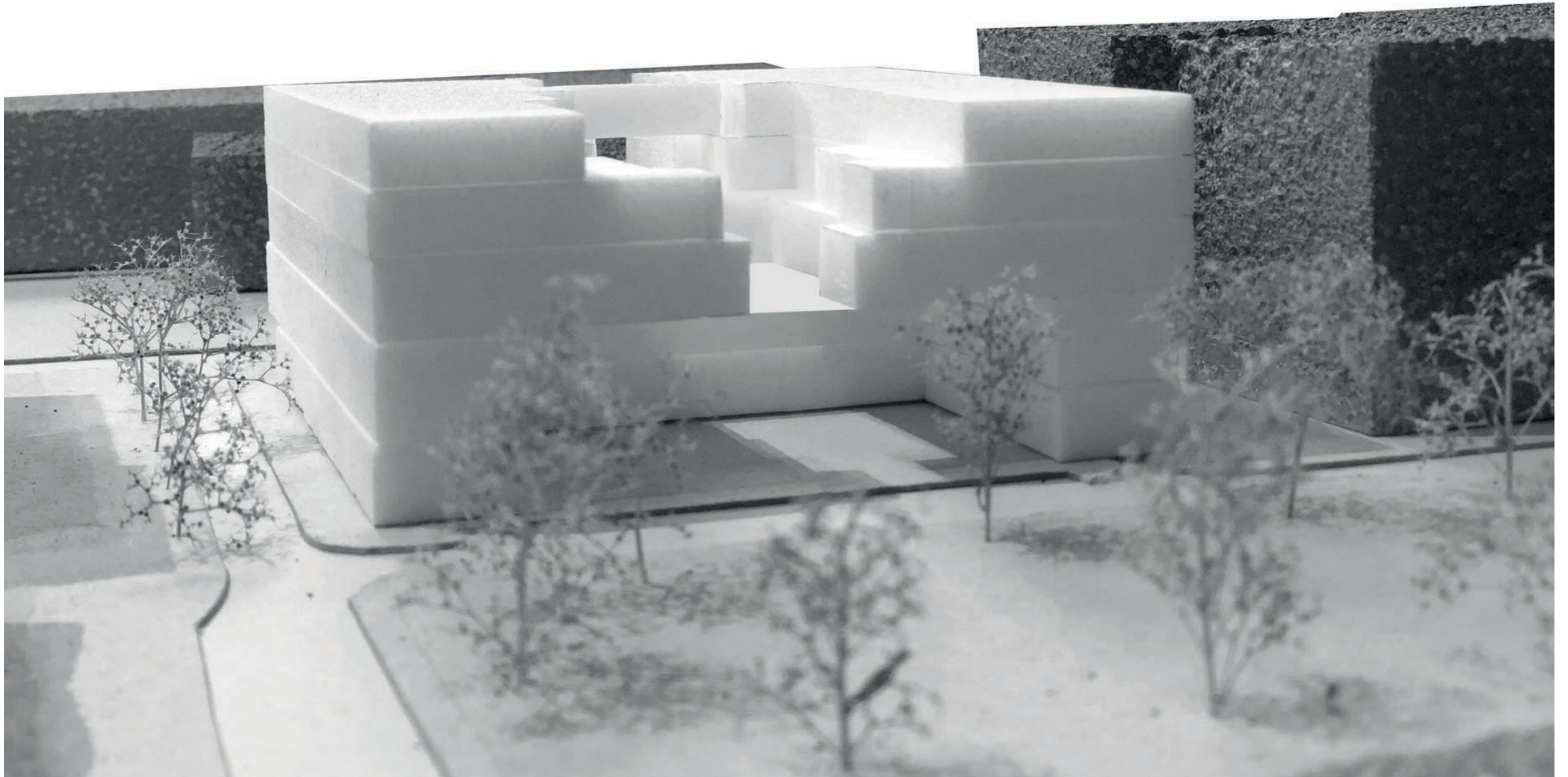


# PERSPEKTIVE INNENHOF I 23

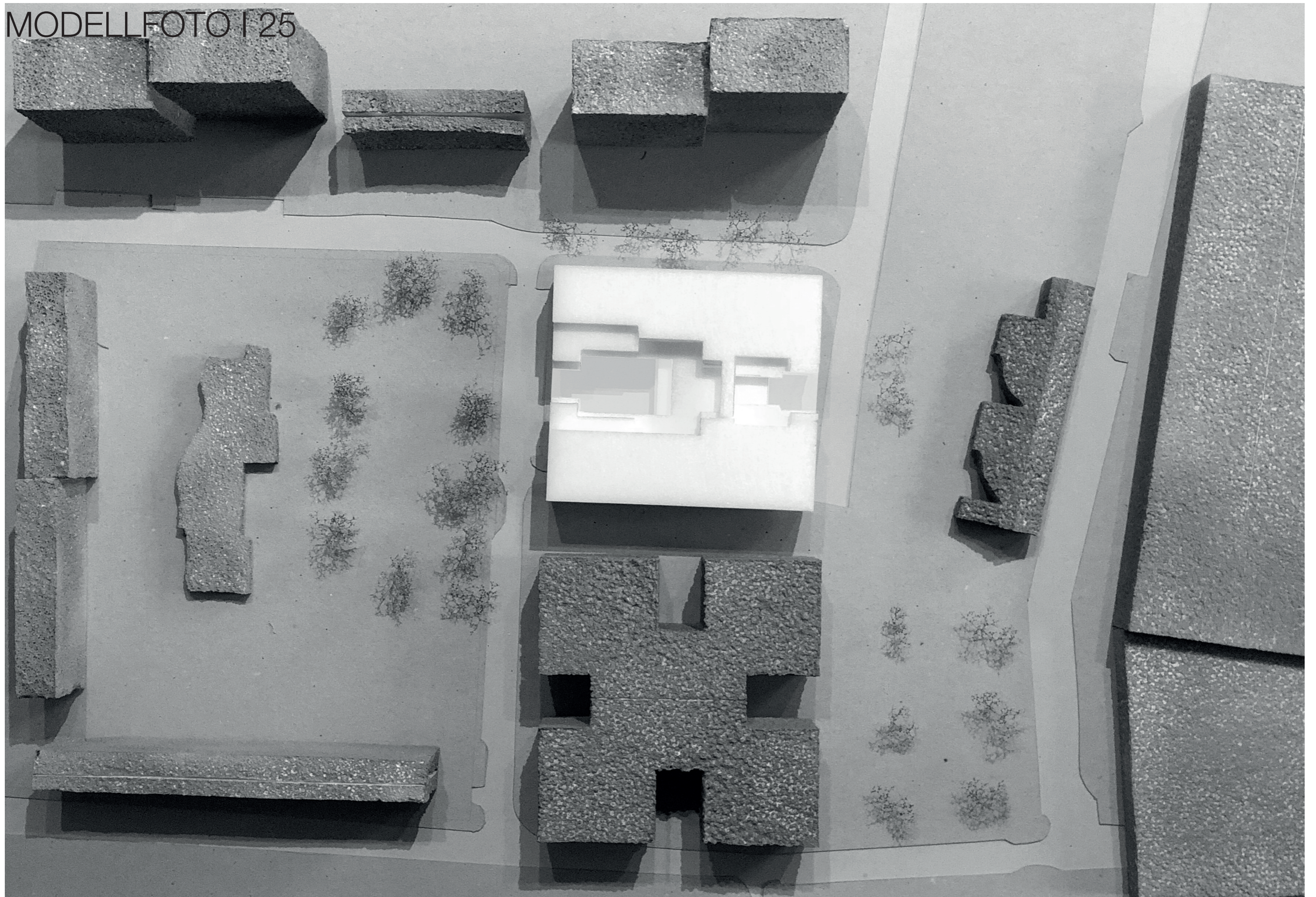




# MODELLFOTO I 24



MODELLFOTO I 25





VIELEN DANK!